

## A Helpful Tip Before You Start:

For the most accurate quote, we recommend walking around your home with a **pen and paper** to jot down counts as you go.

---

## How To Count Windows For Your Quote

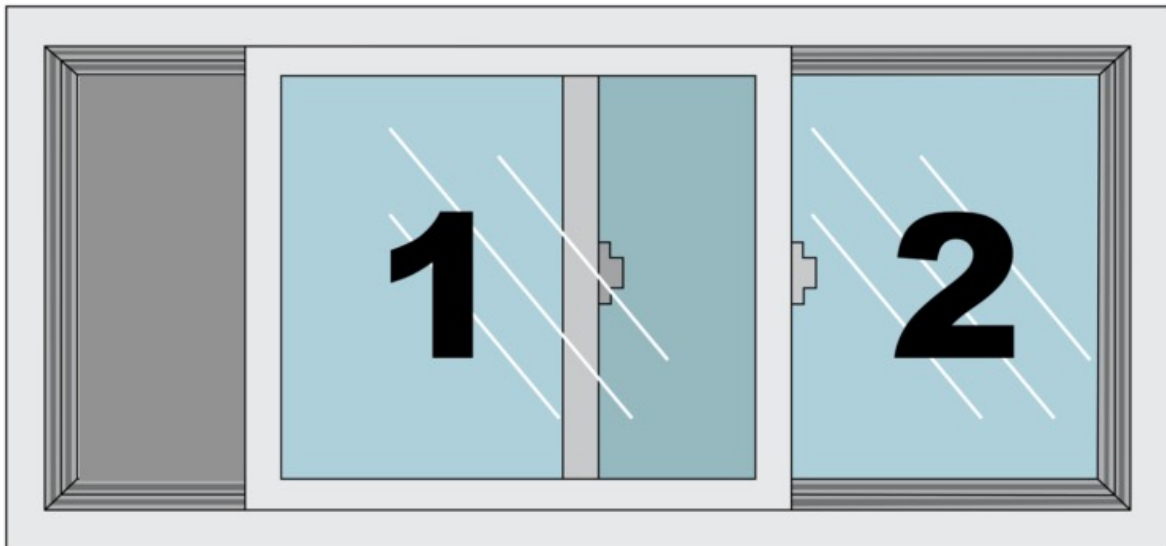
Count the total number of window panes (not just windows)

A “window” often contains more than one pane of glass. A **pane** is a single piece of glass surrounded by a frame on all sides.

When counting, **each pane counts separately.**

For example:

- A window with two side-by-side pieces of glass = **2 panes**  
(See example below)



To give you the most accurate quote, we ask you to separate panes into the following categories:

## #1 – REGULAR SIZE PANES

These are the most common window panes found in homes.

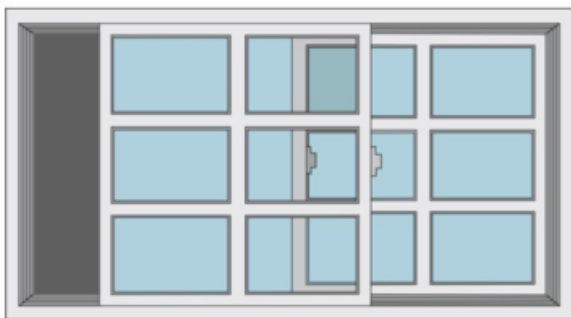
They don't have to look exactly like the example below - this is simply to show how we count them.



## #2 – SMALL PANES (FRENCH / GRID STYLE)

These are smaller panes, often about the size you can reach your hand across.

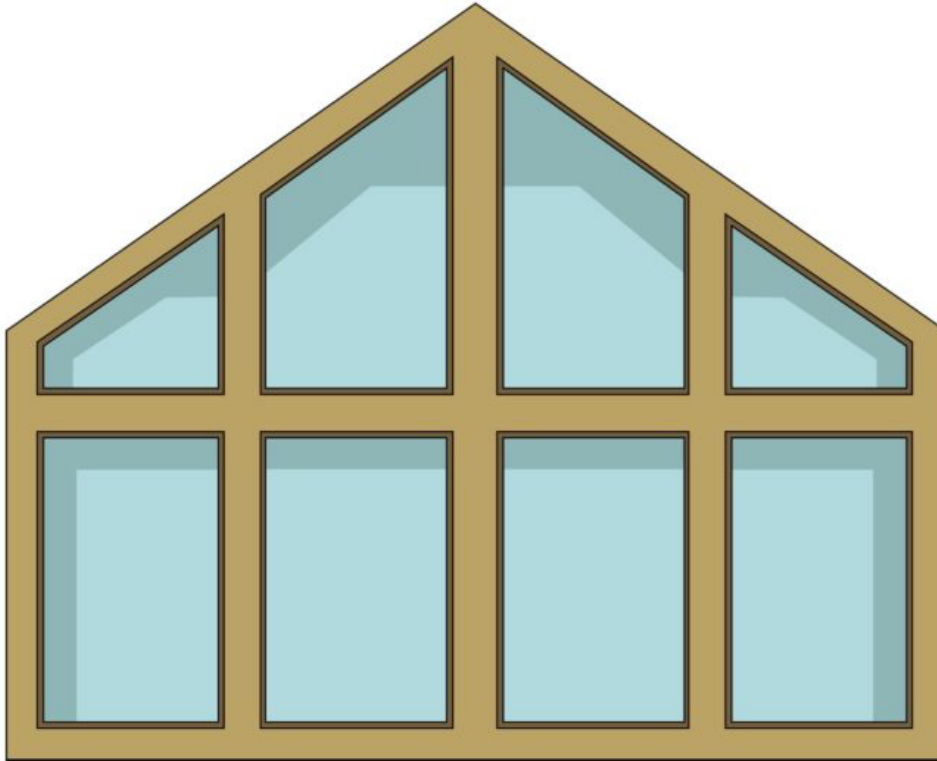
Because these panes are usually more numerous—but priced differently—it helps to count them separately for accuracy.



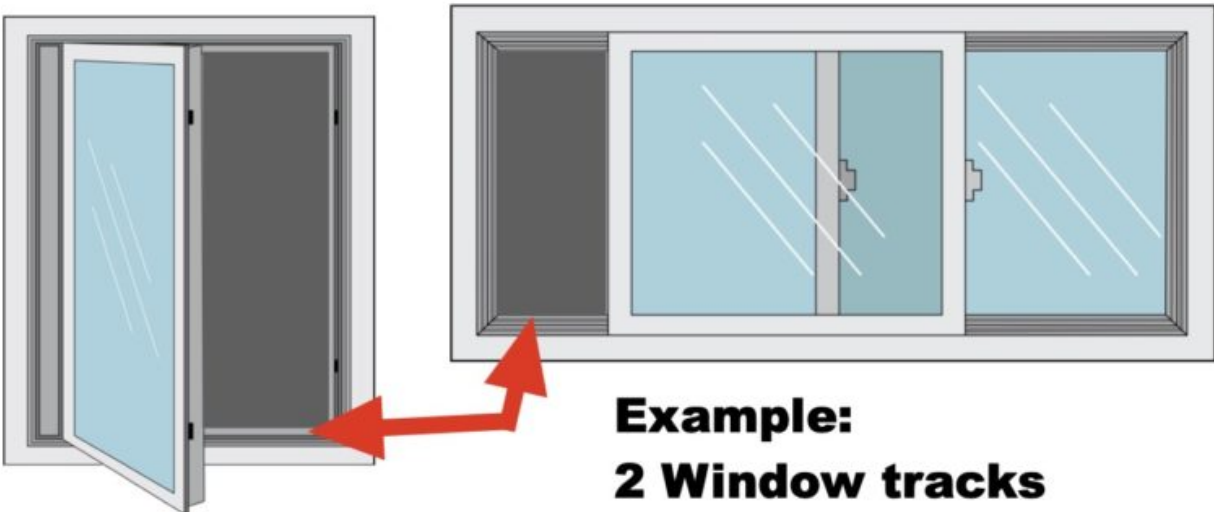
**Small panes  
count separately.**  
*(Seen here are 12)*

### #3 – GEOMETRIC OR SPECIALTY PANES

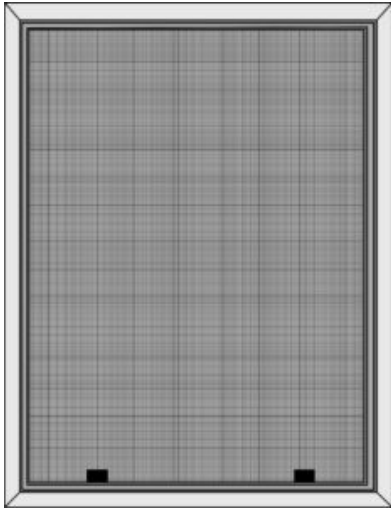
Do you have panes with shapes like arches, triangles, circles, or angles?  
If so, please count these **separately** as well.



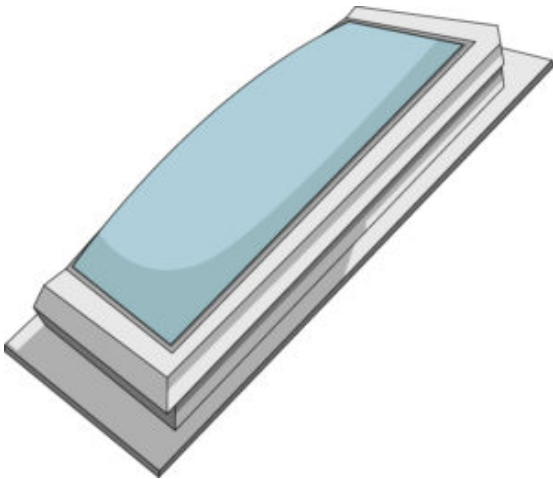
### #4 – WINDOWS ON TRACKS



**#5 - WINDOW SCREENS**



**#6 - SKYLIGHTS**



#7 - PATIO DECK GLASS

